

FEES REDUCTION HELD!

Earlier this year, Local Authorities were asked to cut costs where they could, so we reduced our fees to co-operate fully during these straightened times. Feedback from our customers shows that this is appreciated and that the standard of our training and consultancy continues to be of the very highest - resulting in a cost effective solution for all.

Contact us:

Louise Robinson
Training Manager

On 01428 714470 or email at
louise@in-trac.co.uk

For further details, please see our
website: www.in-trac.co.uk



ISO CERTIFICATION ACHIEVED

We are proud to announce that our business management system and processes have been certified by BSI (British Standards Institution) as meeting the requirements of ISO 9001: 2008. This is the internationally recognised quality management standard and we can now display the BSI logo and certificate number on our business documents.

Subjected to a rigorous two stage assessment by BSI, In-Trac have documented and maintained the business management system, as well as demonstrated total commitment to the continual improvement of the business. This achievement means we can assure our customers that our highly regarded professional services are supported by an efficient business system, dedicated to maintaining continuous quality throughout.



FS 568126

IN-TRAC Newsletter

Issue 4

October 2011

SUPERVISION CONFERENCE-LAST REMAINING PLACES!

“Supervision and Relationship Based Practice : perspectives from attachment theory

Wednesday, 7th December 2011 – 9.30am – 4.00pm

Woburn House Conference Centre

Tavistock Square, London WV1H 9HQ

£65 + VAT including conference pack and refreshments

Supervision is fundamental to the delivery of effective social care services, so much so, that it can be considered an integral part of the service” (Morrison 2009)

Following the success of last November's conference, held in memory of Tony Morrison, we have been inundated with requests to stage another event. We are therefore delighted to report that Clark Baim and Geese Theatre Company will be joining together once again to explore how an understanding of adult attachment can help us make supervision more effective and meaningful.

The aim of this not-for-profit event, will be to promote positive supervision relationships that inspire and motivate staff to work towards the best possible outcomes for the users of their services.

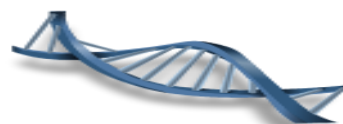
The day will draw significantly from the book by Clark Baim and Tony Morrison, 2011: Attachment-based Practice with Adults: Understanding strategies and promoting possible change (Pavilion) as well as focusing on the importance of enhancing the practitioner's capacity to work effectively with relationships in their day to day practice, in line with the approach of the Munro review.

Demand has been huge – so hurry and book your place now!

Either on-line: www.in-trac.co.uk or call us on 01428 641 425

THE DEVELOPING CHILD.....

In-Trac has recently completed an in-depth review of our Child Development courses. We can now provide updated courses, offering an overview of ground-breaking new developments in neuroscience, biology, epigenetics and attachment theory. This fascinating training focuses on why and how these developments can inform assessments of children's needs and influence planning.



HOT OFF THE PRESS!

It's been a busy time for In-Trac authors! December 2011 sees the much awaited "*Mastering Social Work Supervision*" by In-Trac director, **Jane Wonnacott**, (Published by JKP), which is an accessible guide to the essential skills of social work supervision. "Social work supervisors and managers need mastery of the relevant knowledge and skills in order to ensure successful social work practice," says author, Jane Wonnacott. This publication covers the development of the supervisor-supervisee relationship, as well as providing a sound foundation for critical thinking and reflective practice – vignettes and exercises are included throughout.

Hot on Jane's heels are In-Trac Associates, Linda Gast and Anne Patmore, who will see their book, "*Mastering Approaches to Diversity in Social Work*" to be published in January 2012 also by JKP. Grounded in practice experience and packed with tools and models, this book is an accessible guide to diversity issues in social work.

Future contributions in this series of short, accessible books, to be published in the spring of 2012, include subjects such as Working with Resistant Families, Assessment Practice with Children and Families and Working at the Interface of Adult Mental Health and Children's Services.

These are to be authored by experienced In-Trac Associates, Jeremy Frankel, Fiona Mainstone and Jane Wiffin and edited by Jane Wonnacott; focusing on the everyday key skills that social workers need in order to practise effectively.



CWDC SUCCESS STORY

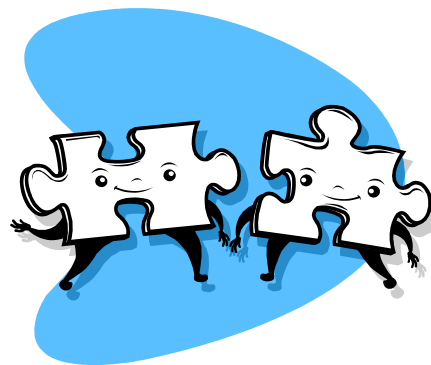
In-Trac has been successful, once again, in securing the contract to provide supervision training on behalf of the Child Workforce Development Council (CWDC), to front line managers in Children's Social Care. This in-depth, three day training programme is being delivered between November 2011 and February 2012 to organisations signed up to the CWDC NSQW/EPD Support to FLM project.

There is the additional option this year for participants to attend a two day "Train the Trainers" course, in order to build capacity within local authorities. The highly motivating training materials continue to be based on the inspiring work of the late **Tony Morrison** and In-Trac Director, **Jane Wonnacott**.

NEW FACES!

A warm welcome to Tracey Hughes and Debbie Bowyer who have recently joined the busy In-Trac Training Administration team, based at our Head Office in Haslemere, Surrey.

Tracey's computer skills are second to none and she is an absolute whizz when it comes to co-ordinating the participant packs for our wide ranging Training courses all over the UK. Debbie comes from a PR and marketing background and will be responsible for ensuring that all In-Trac written material is of the highest quality, as well as updating our website.



In-Trac Training and Consultancy, PO Box 74, Haslemere GU27 2YP

www.in-trac.co.uk